

TGE/PED Ag

Transmissible Gastroenteritis virus/ Porcine Epidemic Diarrhea antigen

Transmissible Gastro-Enteritis (TGE) is a viral disease of the small intestine that causes vomiting and diarrhea in pigs of all ages. The infection spreads rapidly by aerosol or contact exposure.

Porcine Epidemic Diarrhea Virus (PEDV) is a member of the coronavirus group which causes watery diarrhea, dehydration and high mortality in suckling pigs. The PEDV is transmitted by feces from infected pigs after oral ingestion.

ELISA and RT-PCR assays to detect viral antigens in feces or intestinal contents are useful, but require specialized instruments and laboratory personnel. The Anigen Rapid TGE/PED Ag test kit has been developed to provide fast and reliable test results of TGE/PED antigen in field conditions.



Indications

- Differential diagnosis of swine diarrheal disease
- TGE/PED field monitoring
- Tentative diagnosis for swift control in outbreak suspected situation

Sensitivity and Specificity tests

RT-PCR	Sensitivity	Specificity
Rapid TGE Ag	92.1%	95.2%
Rapid PED Ag	92%	98%

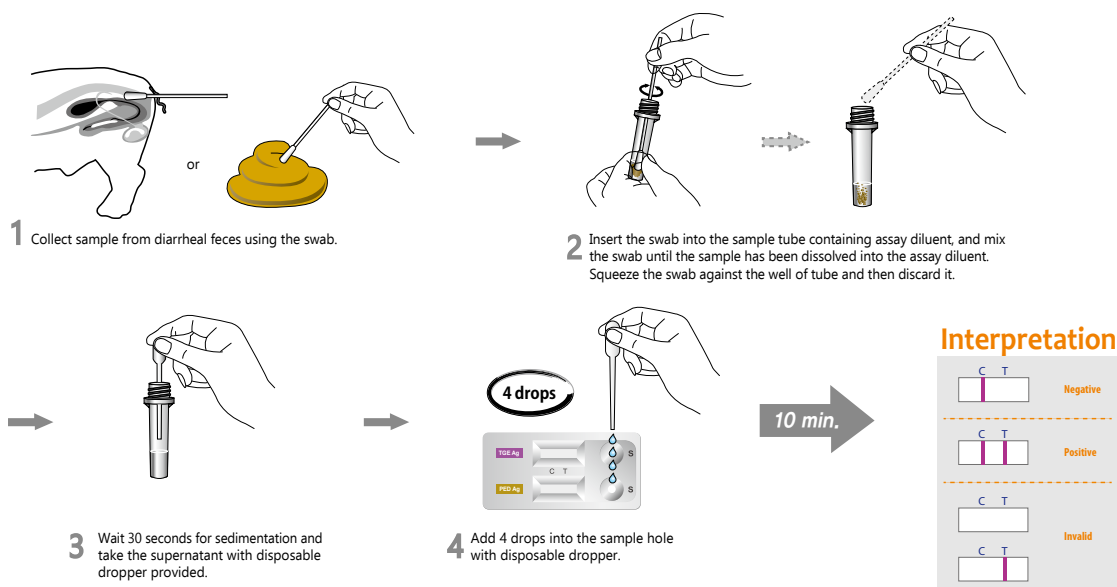
Special Features

- No cross-reaction with other etiologic agents
- World's first & sole TGE/PED virus antigen Rapid test kit
- Specimen : Diarrheal feces

Cross-reaction Tests

	Sample		
	PEDV	TGEV	<i>E.coli</i>
Anigen Rapid PED Ag	POS	-	-
Anigen Rapid TGE Ag	-	POS	-

Test Procedures



Ordering Information

Cat. No.	Description	Type	Packing size
RC1403DD	Rapid TGE/PED Ag	Dual Device	1 Test x 10/Kit