

# Bovine TB Ab

## *Mycobacterium bovis* antibody

Bovine tuberculosis is a chronic infectious disease caused by *Mycobacterium bovis*. Bovine tuberculosis infection is usually diagnosed in the live animal on the basis of delayed hypersensitivity reactions. Subclinical infection is common and clinical signs are non-specific in many cases. A sensitive and accurate diagnostic tool is required because purified protein derivative (PPD) test has only a 65.6% sensitivity (Wood et al., Vet. Microbiol, 40:125-135, 1994) and other mycobacterium infection (eg; *M. avium*) should be distinguished with this method. The MPB 70 protein was revealed to be a highly species specific protein secreted by *Mycobacterium bovis*. Anigen rapid bovine TB Ab test kit has been developed using MPB70 protein with an immunochromatographic assay method.



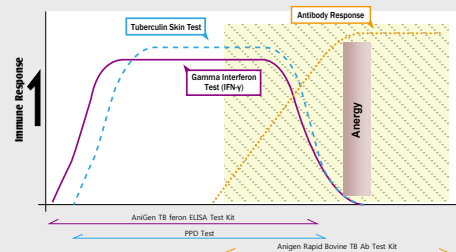
## Indications

- Search out BTB carrier in field
- Screening for test and slaughter government policy
- First step for massive screening instead of PPD in short-handed situation
- Combine with PPD or IFN- $\gamma$  assay in eradication system

## Special Features

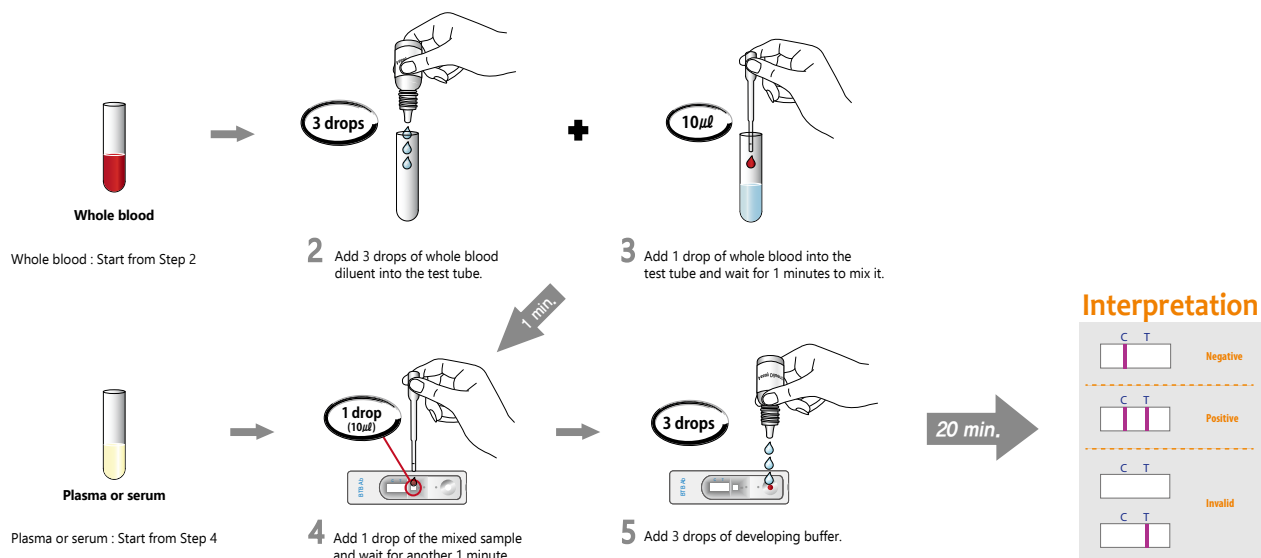
- No cross reaction against other mycobacterium species (*M. avium*)
- Easy to use, saving time and labor
- Specimen: Blood, Plasma, Serum
- Sensitivity: 81.7% vs. PPD test, 84.2% vs. "E" commercial ELISA
- Specificity: 91.4% vs. PPD test, 84% vs. "E" commercial ELISA

### Immune development of bovine tuberculosis



Anigen Rapid BTB Ab Test Kit detects mid to late (anergy) stage of TB affected cattle by immunochromatographic assay (Applicable in field assay)  
Generally, *M. bovis* Ab is detectable 90 to 100 days after infection

## Test Procedures



## Ordering Information

Cat. No.	Description	Type	Packing size
RB2302DD	Rapid Bovine TB Ab	Device	1 Test x 10/Kit